



Encourage, Empower, Excel

# **Eagle Newsletter November 27, 2023**



DECEMBER

# Important Dates

**Dec. 8 – Personalized Learning Day**

**Dec. 11 - 15 PTO - during the week will have the Santa Shop; The shop will be open during recess and Essential Arts**

**Dec. 14 – Cookies with Santa 5:30-6:30 p.m.**

**Dec. 16 - Mrs. Claus' Closet 9:00 a.m. - 12:00 p.m. in Heritage Gym**

**Dec. 18 - 4th Grade Exhibitions**

**Dec. 19 – Awards Day, times TBA**

**Dec. 20 - Jan. 2– Winter Break.**

**Jan. 3 - School resumes**

# After School Club Schedule

## Nov. 27th - Dec. 1st

- **Send in a transportation note every time your child stays after school for a club!**

Monday	Tuesday	Wednesday	Thursday	Friday
Odyssey of the Mind 2:30 p.m. - 4:00 p.m.	5th Grade STLP 2:30 p.m. - 4:00 p.m.	Boys Who Code 2:30 p.m.- 4:00 p.m.	3rd & 4th Grade STLP 2:30 p.m. - 4:00 p.m.	
		Choir 2:30 p.m. - 3:30 p.m.		

# Breakfast & Lunch Menu – Cycle 1

**Nov. 27th - Dec. 1st**

**All students receive FREE breakfast and lunch. Snacks will be sold on Mondays, Wednesdays, and Fridays.**

Cycle 1 Monday	Cycle 1 Tuesday	Cycle 1 Wednesday	Cycle 1 Thursday	Cycle 1 Friday
<b>Breakfast</b>	<b>Breakfast</b>	<b>Breakfast</b>	<b>Breakfast</b>	<b>Breakfast</b>
Mini Waffles (37g)	Cereal (24g)	Pancake Wraps (15g)	WG Donut (29g)	Cereal (24g)
Juice (14-19g)	Juice (14-19g)	Juice (14-19g)	Juice (14-19g)	Juice (14-19g)
Peaches (16g)	Applesauce (13g)	Tater Puffs (19g)	Orange Wedges (22g)	Apple Slices (7g)
Milk	Milk	Milk	Milk	Milk
<b>Lunch</b>	<b>Lunch</b>	<b>Lunch</b>	<b>Lunch</b>	<b>Lunch</b>
Pasta w/ Beef Sauce(24g)	Hamburger (36g)	Chicken Nuggets (16g)	Hot Dog on Bun (31g)	Pizza variety(35g)
Breadstick (14g)	French Fries (3/4c)(24g)	WG Roll (22g)	Baked Beans (50g)	Fresh Carrots (6g)
Broccoli (3/4 c)(5g)	Peaches (16g)	Mashed Potatoes (34g)	Sweet Potato Puffs (30g)	Corn (21g)
Pears (14g)	Milk	Green Beans (3g)	Pineapple (16g)	Fruit Cup
Milk		Fresh Fruit	Cookie (29g)	Milk



# Lost & Found

If your child is missing a jacket, sweatshirt, lunch box, or water bottle, then please have them check the lost and found.

Any unclaimed items will be donated over winter break.



There is currently a large number of jackets and sweatshirts in the lost and found.



DECEMBER 14, 2023

5:30 - 6:30 PM

YOU ARE INVITED TO COME HEAR THE HERITAGE  
CHOIR SING AND SANTA READ ONE OF HIS FAVORITE  
STORIES! AFTER THAT, ENJOY SOME COOKIES AND  
TAKE A PICTURE WITH SANTA!

THE SANTA SHOP WILL OPEN  
AFTER SANTA FINISHES READING  
AND STAY OPEN UNTIL 6:30.



# MRS. CLAUS' CLOSET



Come visit with Mrs. Claus and  
shop for FREE gently used toys!

EVERYONE IS WELCOME!

## HERITAGE ELEMENTARY

8300 FRANKFORT ROAD

DECEMBER 16TH  
9:00AM-12:00PM



Interested in donating or  
volunteering? Contact

**Kelly McNew at 502-220-8665**  
or  
**Kelsey Turley at 502-220-8017**



In Partnership with:  
**Heritage Elementary**



**You are invited to**



## **Heritage Wildlife Center**

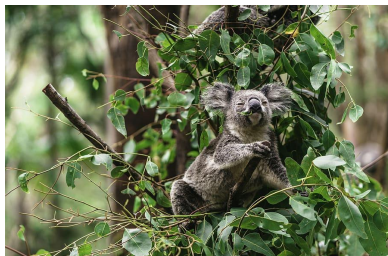
**Exhibitions on December 18th at 10:30 – 11:15 am.**

**The students may dress up as their plant or animal, or they can wear professional attire. No jeans, please.**

**If a family cannot provide a student with these items,  
please contact Mrs. Roni Bohannon  
in the Family Resource Center @ 502–829–5242 or  
[veronica.bohannon@shelby.kyschools.us](mailto:veronica.bohannon@shelby.kyschools.us).**

**Join us in exploring the beautiful Heritage Wildlife Center! Engage in discourse  
presented by **Heritage's 4th–grade students as they become experts on plant  
and animal adaptations.****

**If you have any questions, you may contact your child's teacher. You may also  
contact Mrs. Black by email [johnna.black@shelby.kyschools.us](mailto:johnna.black@shelby.kyschools.us) or by phone at  
(502) 829–5242.**





[Heritage 23-24: Santa Shop Volunteers Needed \(signupgenius.com\)](https://signupgenius.com)

Please direct any questions to [heritagepto1@gmail.com](mailto:heritagepto1@gmail.com)

Happy Shopping!  
PTO Team

## **Shelby County Schools**

### **AHERA Annual Notice**

TO: Parents, Guardians, Teachers and School Employees

FROM: Scott Meredith, LEA Designee

SUBJECT: Asbestos Management Plan for Shelby County Schools

2023-2024 Academic School Year

Date: 6/13/2023

This notice informs you that Shelby County Schools complies with the Asbestos Hazard Emergency Response Act (AHERA- EPA 40 CFR Part 763). AHERA requires school systems to inspect their buildings for asbestos containing building materials and to have a written asbestos management plan.

An Asbestos Management Plan for the school district is available for review at the Central Office during normal business hours. Please contact me if you would like to view this Plan. A copy of the Plan is also available at each school.



Mr. Scott Meredith  
Contact #: 502-633-2375

# COMMUNITY EVENTS



## Resources & Information

# P-EBT Applications Open 8/7 for Most Eligible Students

**Public and private school students can apply Aug. 7;  
Homeschool and virtual students can apply Sept. 4**

P-EBT provides a reimbursement to households with students that attended school in-person, virtually or through homeschool and had any COVID-19 related school absences between Sept. 1, 2022, and May 11, 2023. This reimbursement is meant to cover the cost of at-home food purchases made because the student was unable to participate in school learning due to a COVID-19 related reason.

The benefit amount varies for each approved student due to the number of days missed. The daily amount for each school day missed is \$8.18.

The application will roll out in phases. The first application phase begins Aug. 7. Beginning Aug. 7, public and private school students who received free or reduced price meals at school AND were absent from school one or more days due to COVID, may apply for P-EBT for the days missed. The applicant will need the student's State Student Identification Number (SSID), dates of school days missed for COVID-related reasons for Sept 1, 2022, through May 11, 2023, and other personal identifying information for the student.

Beginning Sept. 4, homeschool students and students who attended school virtually may apply for benefits. The applicant will need the student's personal identifying information and, if a benefit recipient, the household's case number. Applicants may also need household financial information to complete the application for homeschool and virtual students.

Parents must apply at <https://www.kypebt.ky.gov/> to determine if their child is eligible for a reimbursement.

## Summer P-EBT

Enrollment in Summer P-EBT is automatic for public and private school students who received free/reduced-price meals during May 2023.

SNAP recipients under age 6 (aka Child Care P-EBT), homeschool, and virtual students are not eligible due to the end of the federal Public Health Emergency on May 11, 2023.

For more information on P-EBT, call 1-833-501-5297.



**TEAM  
KENTUCKY.**  
CABINET FOR HEALTH  
AND FAMILY SERVICES





# Kentucky Family Leadership Academy (KFLA) with Amanda and Carol

This Kentucky Family Leadership Academy is made possible through the continued partnership of Prevent Child Abuse KY (PCA KY) through a grant from Prevent Child Abuse America, the Kentucky Department for Community Based Services and Kentucky Partnership for Families and Children, Inc. (KPFC).

You have four options for attending the Kentucky Family Leadership Academy.  
Pick the one that works best for you!

Date of KFLA	Method	Location	Included for parent participants
October 4, 2023 10:00 a.m. – 7:00 p.m. ET and October 5, 2023 8:00 a.m. – 4:30 p.m. ET	Two days 7.5 hours each day In-person	KPFC office 600 Teton Trail Frankfort, KY	<ul style="list-style-type: none"> <li>★ One-night lodging</li> <li>★ Meals</li> <li>★ Training materials</li> <li>★ \$25 gas card</li> <li>★ \$50 toward your child care</li> <li>★ \$200 payment for your time to attend</li> </ul>
November 28 – 30, 2023 9:00 a.m. – 3:30 p.m. ET	Three days 5.0 hours each day Virtual	You will need a computer and wi-fi to participate	<ul style="list-style-type: none"> <li>★ Training materials</li> <li>★ \$50 toward your child care while participating virtually</li> <li>★ \$200 payment for your time to attend</li> </ul>
January 30 – February 22, 2024 6:30 – 8:30 p.m. ET	Eight evenings 2.0 hours each Virtual (Tuesdays & Thursdays)	You will need a computer and wi-fi to participate	<ul style="list-style-type: none"> <li>★ Training materials</li> <li>★ \$50 toward your child care while participating virtually</li> <li>★ \$200 payment for your time to attend</li> </ul>
May 17, 2024 7:00 – 10:00 p.m. ET May 18, 2024 8:30 a.m. – 5:00 p.m. May 19, 2024 9:00 a.m. – 1:00 p.m. ET	Weekend 15.0 hours total In-person	Rough River State Park 450 Lodge Rd Falls of Rough, KY 40119	<ul style="list-style-type: none"> <li>★ Two-nights lodging</li> <li>★ Meals</li> <li>★ Training materials</li> <li>★ \$25 gas card</li> <li>★ \$50 toward your child care</li> <li>★ \$200 payment for your time to attend</li> </ul>

To register for any of these KFLAs, point your phone camera at the QR Code or click on it.



To receive the \$200 payment for your time, you must attend the entire fifteen-hour training. If you miss a portion of the training, we will schedule a time with you to make it up. If you are unable to make up the missed portion, you will receive \$10 per hour based on the time attended. If you complete the entire fifteen-hours, you will receive \$10 per hour = \$150 + \$50 bonus for finishing!

## These Kentucky Family Leadership Academies are for:

- Parents that are receiving, or have received, child welfare services.
- Allied community partners including but not limited to,
  - DCBS workers,
  - Community Collaboration for Children parent reps,
  - DCBS Trusted Advisors Council, and
  - KY SEAT members.



## Why should you attend?

1. To learn how to effectively advocate for your family and others,
2. To strengthen your own leadership skills,
3. To strategically share your voice and lived experience to make change happen, and
4. To increase your confidence in being a leader in your community.

If you have any questions, contact Amanda Metcalf at [ametcalf@kypartnership.org](mailto:ametcalf@kypartnership.org).



# IT'S MORE THAN A MEAL APPLICATION



Did you know that meal applications assist in so much more than just meals? Take a look!



## INTERNET ACCESS

Eligible for discounted internet access services



## SAT, ACT, AP FEES

Discounted fees for academic testing & academic school fee waiver

## COLLEGE APPLICATION FEES

Discount on fees associated with applying for college



## SCHOOL FUNDING

Maintain funding for student programs and services



## ATHLETICS

Discount fees on Pay to Play



## SCHOOL MEALS

Free or Reduced prices on delicious & nutritious meals

# Start saving on your home internet with the Affordable Connectivity Program

---

*Published: 5/5/2023 1:23 PM*

Most Kentucky households with a student enrolled in public school qualify for a monthly discount on their home or mobile internet service through the [Affordable Connectivity Program](#) (ACP). The ACP is provided by the Federal Communications Commission to support student success. KDE encourages all eligible households to claim this benefit and start saving on your internet service.

## You may be able to save:

- Up to \$30/month on your new or existing internet service, and/or
- a one-time discount up to \$100 for the purchase of a tablet, laptop, or desktop computer.

## Chances are you qualify!

At least 80% of Kentucky households with students enrolled in public schools are eligible for ACP benefits. Here are the ways you can qualify:

- your child/dependent is enrolled in a school participating in the Community Eligibility Program where all students receive free- or reduced-price meals,
- you or your child/dependent participate in government assistance programs such as SNAP, Medicaid, Free or Reduced-price School Lunch Program, or [other programs](#).
- household income is 200% or less than the [Federal Poverty Guidelines](#), or
- anyone in your household already receives a Lifeline benefit.
- If you still have questions about if you qualify, please visit the [Do I Qualify ACP webpage for specifics](#).

To learn more, visit the [Federal Communications Commission site](#) or call (877) 384-2575.

<https://education.ky.gov/districts/tech/Pages/Affordable-Connectivity-Program.aspx>



### Kentucky Medicaid Renewals

#### Here is what you need to know to stay covered!

If you or a family member currently has health coverage through Medicaid or the Kentucky Children's Health Insurance Program, called KCHIP, there are changes coming.

#### What's changing?

Because of COVID-19, the federal government declared a public health emergency (PHE). During this time, changes were made so that Medicaid and KCHIP renewals were not required, so people did not lose their coverage.

However, Kentucky will restart Medicaid annual renewals April 1, 2023. Make sure you take the necessary steps to keep your coverage!

★ **You will receive a letter when it is your time to renew.**

#### What do you need to do?

**1 Update your information:**

Make sure [kynect.ky.gov](https://kynect.ky.gov) has your correct:

- ✓ mailing address
- ✓ phone number
- ✓ email

This way, we can contact you without delay.

**2 Check your mail:**

You will get a letter about your Medicaid or KCHIP renewal **when it is your time**. The letter will let you know if you need to complete a form or send in information to keep your coverage.

**3 Send in information:**

If you get a form, fill it out, return it right away. Make sure to give us any information we request. The information will help determine if you still qualify for coverage.

#### Have questions? Need help?

To make sure your information is updated, visit [kynect.ky.gov](https://kynect.ky.gov)  
or call 855-4kynect (855-459-6328)

**Kentucky Medicaid will reach out to you when it is your time to renew.**

You can also get help from your local Department for Community Based Services (DCBS) staff and from kynectors. To find a kynector or your local DCBS office please visit <https://kynect.ky.gov/healthcoverage>.

FREE  
Day Pass to  
Clear Creek  
FAC

# The First Saturday Walkabout

Sign in at the front desk on the first Saturday of any month, rain or shine, from 8:00 to 8:30 a.m. Receive one FREE Day Pass per person. Afterward, walk on the trails, on the walking path, or on the inside walking track. Use your pass at any later date of your choosing.

8:00 - 8:30 a.m.  
The First Saturday  
of Every Month

Clear Creek  
Family Activity Center  
717 Burks Branch Rd  
Shelbyville, KY





## Ready to Jump Start your Future?

We can help you get a good job and career.

**Kentucky Career Center services and KentuckianaWorks offer assistance at any point in your career path. Our services include:**


- Customized career advice for today's job market
- Help optimizing your resume & finding jobs. Start at [focuscareer.ky.gov](https://focuscareer.ky.gov)
- Assistance sharpening your interview skills
- Help building your professional network
- Up-to-date, local career information at [www.careercalculator.org](https://www.careercalculator.org)
- More than 4,000 online training courses
- Access to job leads and job fairs
- Specialized services for qualifying veterans
- Resources for visually impaired or disabled job seekers

**kentuckianaworks.org**

KentuckianaWorks is the Greater Louisville Workforce Development Board that serves Jefferson, Bullitt, Henry, Oldham, Shelby, Spencer and Trimble counties, and is an operator of the Kentucky Career Center, through contract with ReCare Workforce Services, in partnership with the Office of Employment and Training and other agencies. Funding is provided by the U.S. Department of Labor, through the Ky. Education and Workforce Development Cabinet, and administered by KentuckianaWorks - an agency of Louisville Metro Government, Equal Service, Education and Employment Opportunities M/F/D/V.

**Kentucky  
Career Center**  
KentuckianaWorks

  
**KENTUCKIANAWORKS**

  
**AmericanJobCenter**

# Shelby County Daycares List

Call for openings.

## Childcare Facilities /Cuidado de Niños

- **Adventure Club- infants and toddlers through 5th grade**  
<https://simpsonvillebaptist.com/connect/weekday-preschool-2/>  
Phone (502) 722-5249 or Email:  
ac@simpsonvillebaptist.com
- **Inspirations Child Care**  
7387 Shelbyville Rd, Simpsonville, KY 40067 Phone: (502) 205-0026
- **Corpus Christi Classical Academy Montessori Program**  
7010 Us Highway 60, Simpsonville KY 40067  
Simpsonville, KY 40067 | (502) 722-8090
- **Kidsplay Child Care**  
54 Old 7 Mile Pike, Shelbyville, KY 40065 (502) 633-9663
- **Shelbyville Community Day Care**  
520 Mount Eden Rd, Shelbyville, KY 40065 (502) 633-6757
- **Little Hands Development Center**  
250 haven Hill Rd,, Shelbyville, KY 40065 (502) 437-0547

- **Child Town Inc**

1940 Midland Trl, Shelbyville, KY 40065 (502) 633-2050

- **Little Stars Preschool**

100 Loop Rd, Fisherville, KY 40023 (502) 477-1150

- **Dorman Preschool Center**

719 Burks Branch Road, Shelbyville, KY - 40065 (502)  
633-2760

## **Online Search Tool**

<https://www.4cforkids.org/for-families/find-child-care/>

Child Care Referrals Tailored to Your Needs



The Serenity Center has a food bank on  
Wednesdays,  
from 12 p.m. to 4 p.m.

Serenity Center  
98 7<sup>th</sup> Street  
Shelbyville, KY 40065

The Bagdad Baptist Food Pantry is open the  
2<sup>nd</sup> and 4<sup>th</sup> Saturday of every month from 9:15  
a.m. – 12:00 p.m. Food is available to any  
Shelby County residents. Must show a valid  
driver's license. Entry is in the back of the  
church. There is also a small pantry outside  
the church open at all times.



El Serenity Center tiene un banco de  
alimentos los miércoles,  
a partir de las 12:00 a las 4 p.m.

Centro de serenidad  
Calle 7 98  
Shelbyville, KY 40065

La despensa de alimentos bautista de Bagdad  
está abierta el segundo y cuarto sábado de  
cada mes de 9:15 a. m. a 12:00 p. m. La  
comida está disponible para cualquier  
residente del condado de Shelby. Debe  
mostrar una licencia de conducir válida. La  
entrada está en la parte trasera de la iglesia.  
También hay una pequeña despensa fuera de  
la iglesia abierta en todo momento.



# ***Heritage Elementary Family Resource Center***

***Roni Bohannon, Coordinator***

***Phone number: (502) 829-5242***

***Hours of Operation: Monday-Friday 7:00 a.m. -  
3:00 p.m., available evenings and weekends by  
appointment.***

